



GOOD MORNING

Have Good Trading Day

TUESDAY



Price is what you pay.
Value is what you get.

- Warren Buffet



MARKET PULSE

INDIAN INDICES

NAME	CMP	NET CH.	%
SENSEX	26777	-65	-0.24
NIFTY	8201	-19	-0.24

INDIAN ADR'S

SYMBOL	CLOSE	GAIN/ LOSS %
DRREDDY	46.95	-0.04
HDFCBANK	65.56	+0.35
ICICIBK	7.28	+0.83
INFY	19.71	+0.51
TATAMOTOR	34.92	+1.87
WIPRO	12.08	-0.41

FII AND MF ACTIVITY

SYMBOL	In Crs.
FIIs Eq (Provisional)	28.3
FIIs Index Future	516.59
FIIs Index Options	-95.63
FIIs Stock Future	-636.88
FIIs Stock Options	11.18
DII's Eq (Provisional)	-230.63

CURRENCY

RBI RATE	06-JUNE-2016
RUPEE - \$	67.2415
EURO	74.9944
YEN 100	61.8300
GBP	96.9017

MARKET PULSE

GLOBAL INDICES

NAME	CMP	NET CH.	%
DOW	17920	+113	+0.64
NASDAQ	4968	+26	+0.53
NIKKEI	16639	+59	+0.36
HANG SENG	21164	+133	+0.64
SGX NIFTY	8269	+35	+0.43

WORLD COMMODITIES

FUTURE	US\$	CHANGES
CRUDE	49.53	-0.16
NATURAL GAS	2.432	-0.034
GOLD	1246.6	-0.8
SILVER	16.435	-0.012
COPPER	2.1100	-0.0075

WORLD EVENTS

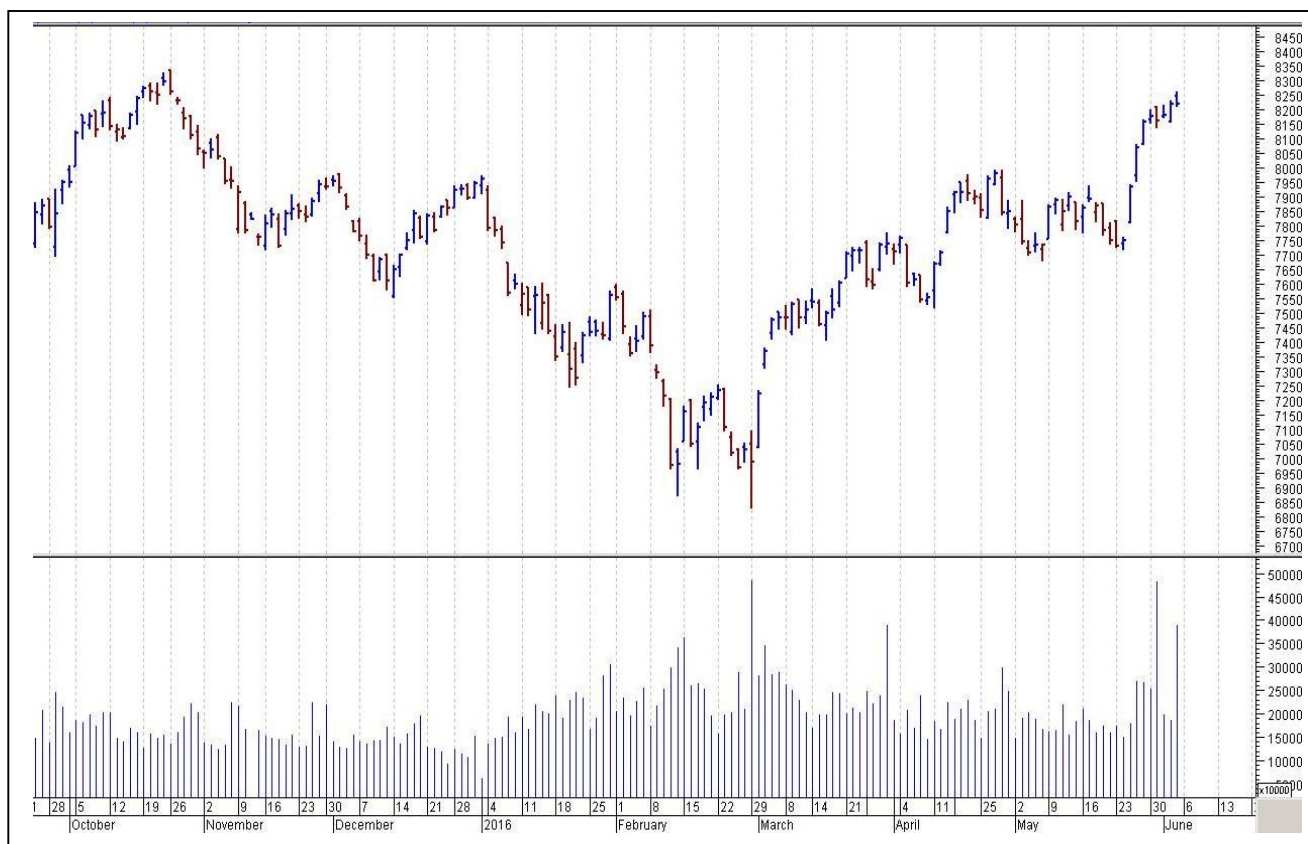
- US: Revised Nonfarm Productivity q/q
- UK: Halifax HPI m/m

TOP STORY

- ICICI Bank -To seek shareholder nod to issue non-convertible debentures (NCDs) up to Rs 25,000 crore on private placement basis
- KKR talks to banks to manage stressed assets -PE firm seeks to partner Indian lenders for bad loan portfolio
- Jindal Steel -Seeks shareholder nod to sell 920 MW captive power plant to arm Jindal Power
- National Pharmaceutical Pricing Authority cuts prices of cancer, diabetes by 25 percent: BS
- Patel Engineering - Joint Lenders Forum to take steps for obtaining approval related to Strategic Debt Restructuring
- Shreyas Shipping partners SCI to strengthen coastal shipping & to expand its presence
- Vedanta Resources to invest USD 500 million in its zinc business: FE
- Anti-dumping duty imposed on chemical import from China and Russia



NIFTY CHART



MARKET COMMENTARY

Indian stock markets prolonged the lull for the second consecutive day and finished the session mildly in red, as market participant adopted cautious approach ahead of the central bank's decision on policy rates and with a number of global risk events scheduled for later this month, including a US Federal Reserve meeting, For today's trade Nifty likely to trade in the range between 8235 – 8265 in the upper side and 8175 - 8165 in the lower side.

MARKET LEVELS

	CMP	SUPPORT LEVELS				RESISTANCE LEVELS			
NIFTY	8201	8175	8165	8145	8115	8235	8265	8285	8325
USDINR	67.24	67.05	66.9	66.85	66.6	67.3	67.45	67.6	67.8



BULK DEALS (BSE)

SCRIP	CLIENT NAME	BUY/SELL	QUANTITY	PRICE
REDINGTON	ICICI PRUDENTIAL LIFE INSURANCE COMPANY LIMITED	B	7,000,000	107
REDINGTON	FIDELITY PURITAN TRUST FIDELITY LOW PRICED STOCK FUND	B	10,000,000	107
REDINGTON	HARROW INVESTMENT HOLDING LIMITED	S	16,405,333	107.01
TATAMTRDVR	HSBC GLOBAL INVESTMENT FUNDS MAURITIUS LTD	S	6,580,000	317
TATAMTRDVR	HSBC GLOBAL INVESTMENT FUNDS INDIAN EQUITY	B	6,580,000	317

BULK DEALS (NSE)

SCRIP	CLIENT NAME	BUY/SELL	QUANTITY	PRICE
IVC	UNO METALS LTD	SELL	1788793	13.09
MASTEK	UNIFI FINANCIAL PVT LTD	SELL	130000	144
RAJTV	KIRAN KUMAR M	BUY	276000	57.38
REDINGTON	HARROW INVESTMENT HOLDING LIMITED	SELL	4100000	107
UGARSUGAR	SHREE RENUKA SUGARS LIMITED	SELL	908950	32.19

SCRIP'S IN F&O BAN

(To resume for normal trading below 80% of market wide limit required)

RCOM

Initial Public Offering (IPO)

Company Name	Security type	Issue Start Date	Issue End Date	Status
NIL				



NIFTY 50 STOCKS: SUPPORT & RESISTANCE						
Symbol	Close	Support 1	Support 2	Pivot Point	Resistance1	Resistance2
ACC	1535	1530	1525	1537	1542	1550
ADANI PORTS	204	198	193	201	207	210
AMBUJACEM	229	227	226	230	231	233
ASIANPAINT	1026	1018	1009	1025	1034	1041
AXISBANK	533	527	521	536	542	551
BAJAJ-AUTO	2630	2616	2602	2633	2647	2664
BANKBARODA	143	141	139	143	145	147
BHARTIARTL	349	344	340	352	356	364
BHEL	118	117	116	118	119	121
BOSCH LTD	22192	22090	21989	22215	22317	22442
BPCL	994	986	979	998	1006	1017
CAIRN	140	139	138	141	142	144
CIPLA	467	464	462	468	470	474
COALINDIA	306	304	302	306	308	311
DRREDDY	3151	3129	3106	3149	3171	3192
GAIL	374	369	364	373	379	383
GRASIM	4319	4299	4279	4321	4341	4364
HCLTECH	725	717	710	723	730	736
HDFC	1252	1245	1238	1255	1262	1272
HDFCBANK	1171	1167	1162	1175	1179	1187
HEROMOTOCO	3113	3087	3060	3120	3147	3180
HINDALCO	107	105	103	106	108	110
HINDUNILVR	879	872	865	882	889	899
ICICIBANK	244	242	240	244	246	248
IDEA	106	105	103	106	107	108
INDUSINDBK	1122	1115	1108	1122	1129	1137
INFY	1267	1260	1252	1268	1275	1284
ITC	356	352	349	355	358	360
KOTAKBANK	765	760	755	768	773	780
LT	1468	1462	1455	1468	1474	1480
LUPIN	1419	1401	1382	1433	1451	1484
M&M	1370	1358	1347	1372	1384	1398
MARUTI	4142	4101	4060	4159	4200	4258
NTPC	147	146	145	147	148	149
ONGC	211	210	208	211	213	215
PNB	77	76	75	77	78	79
POWERGRID	149	148	147	150	150	152
RELIANCE	955	951	946	957	961	967
SBIN	199	196	194	200	202	205
SUNPHARMA	724	714	704	732	742	760
TATAMOTORS	461	452	444	459	467	473
TATAPOWER	74	73	72	74	75	76
TATASTEEL	338	333	328	337	342	345
TCS	2613	2597	2582	2618	2633	2654
TECHM	540	532	524	542	550	560
ULTRACEMCO	3227	3197	3166	3220	3251	3275
VEDL	106	104	102	106	108	110
WIPRO	535	532	528	537	540	545
YESBANK	1065	1050	1035	1059	1074	1084
ZEEL	454	451	448	454	457	460



CORPORATE ACTION / BOARD MEETINGS

NSE Download Ref No:NSE/FAOP/32249:- Exclusion of Futures and Options contracts on IOB and UCOBANK w.e.f. July 01, 2016

NSE Download Ref No : NSE/FAOP/32406:- Exclusion of Futures and Options contracts on Unitech Limited (UNITECH) w.e.f. July 29, 2016

NSE Download Ref No:NSE/FAOP/32511:- Adjustment of Futures and Options contracts in the security ITC Limited. The adjusted strike price shall be arrived at by dividing the old strike price by the adjustment factor i.e. 1.5. The revised market lot would be 2400 w.e.f. July 01, 2016

NSE Download Ref No:NSE/FAOP/32510:- Adjustment of Futures and Options contracts in the security BPCL. The adjusted strike price shall be arrived at by dividing the old strike price by the adjustment factor i.e. 2. The revised market lot would be 1200 w.e.f. July 13, 2016

BOARD MEETINGS

COMPANY NAME	DATE	PURPOSE	RS. PER SH.
SALZERELEC	9-Jun-16	Annual General Meeting/Dividend	1.6
AUROPHARMA	9-Jun-16	Dividend	0.7
INFY	9-Jun-16	Annual General Meeting/Dividend	14.25
SIL	9-Jun-16	Annual General Meeting/Dividend	0.75
BOSCHLTD	9-Jun-16	Annual General Meeting/Dividend	85
ESSELPACK	9-Jun-16	Dividend	2.2
GRUH	10-Jun-16	Annual General Meeting/Dividend	2.3
RALLIS	10-Jun-16	Annual General Meeting/Dividend	2.5
TINPLATE	14-Jun-16	Annual General Meeting/Dividend	2
KANSAINER	14-Jun-16	Annual General Meeting/Dividend	3.05
ORIENTBANK	15-Jun-16	Annual General Meeting/Dividend	0.7
GULPOLY	16-Jun-16	Dividend	1.75
ASIANPAINT	16-Jun-16	Annual General Meeting/Dividend	5.3
ICICIBANK	16-Jun-16	Annual General Meeting/Dividend	5
UNIONBANK	17-Jun-16	Annual General Meeting/Dividend	1.95
PSB	20-Jun-16	Annual General Meeting/Dividend	1.65
EVERESTIND	21-Jun-16	Annual General Meeting/Dividend	5
TATAMETALI	21-Jun-16	Annual General Meeting/Dividend	2
HINDUNILVR	22-Jun-16	Annual General Meeting/Dividend	9.5
INDUSINDBK	23-Jun-16	Annual General Meeting/Dividend	4.5
INDIANB	23-Jun-16	Annual General Meeting/Dividend	1.5
MAANALU	23-Jun-16	Annual General Meeting/Dividend	0.5

NEWS & RUMOURS:

- Gold (Spot Dollar) major support = \$1213/\$1170 & Resistance = \$1278/\$1321.
- Crude oil range->\$45 to \$55.
- Commodities Rise with Stocks before Yellen Speech; Pound Weakens: - Miners and energy companies led stocks higher and commodities advanced on speculation the Federal Reserve will hold off from raising interest rates this month. The pound slumped following polls that showed Britons favor exiting the European Union.
- Goldman Stays a Bear on Aluminum as Output Ramps Up in China: - Aluminum prices will probably extend losses as production in China is set to increase after a rally lifted smelters' profits, according to Goldman Sachs Group Inc.
- Tropical Storm Colin threatens Florida, U.S. Southeast: - Florida braced for flooding and strong winds as Tropical Storm Colin churned toward the state's northern Gulf Coast on Monday, and was expected to make landfall later in the day before crossing the U.S. Southeast.
- U.S. natural gas futures rose to a five-month high on Monday, on forecasts for continued above-normal temperatures across most parts of the U.S. over the next two weeks.
- Gold climbs to 2-week high as focus turns to Yellen: - Gold futures rose to a two-week high in North American trade on Monday, as market players looked ahead to a highly anticipated speech by [Federal Reserve Chair Janet Yellen](#) later in the session for further clues on the timing of the next U.S. rate hike.
- Brent crude added 1.8 percent to \$50.54 a barrel, after falling 0.7 percent last week as OPEC refrained from freezing output at a meeting in Vienna. West Texas Intermediate jumped 2.1 percent to \$49.66 a barrel.

TRENDS & OUTLOOK – DATE: 07- June- 2016

PRECIOUS METALS:

COMMDITY (MCX)	S2	S1	PIVOT POINT	R1	R2
GOLD (Aug)	28800	29050	29425	29700	29966
SILVER (July)	37200	38100	39200	40300	41200

BASE METALS

COMMDITY (MCX)	S2	S1	PIVOT POINT	R1	R2
COPPER (June)	303	308	316	321	325
ZINC (June)	129.75	132.10	135	137.55	140.40
LEAD (June)	110.10	113.20	116.55	119.50	121.75
NICKEL (June)	547	565	581	597	612

ENERGY

COMMDITY (MCX)	S2	S1	PIVOT POINT	R1	R2
CRUDE OIL (June)	3130	3220	3310	3400	3475
NATURAL GAS (June)	151	157	163	168	174

DATE TALKS : TODAY'S ECONOMIC DATA :

RBA Rate Statement, RBI Rate Statement, Halifax HPI of GBP, Revised GDP q/q of EUR, Revised Nonfarm Productivity q/q, Revised Unit Labor Costs q/q, IBD/TIPP Economic Optimism.



Registered Office

Indira House, 3rd Floor, 5 Topiwala Lane,
Opp. Lemington Road Police Station, Grant Road (East), Mumbai - 400007.

Corporate Office

'Ramavat House' E-15, Saket Nagar, Indore - 452018 (M.P.)

Customer Care

Tel: +91-731-4097170/ 71/ 72/ 73/ 74 M. +91 93031 72345

Email: customercare@indiratrade.com www.indiratrade.com



INSTITUTIONAL DEALING UNIT

Africa House, 5, Topiwalla Lane, Lamington Road, Mumbai, 400007

Tel: +91 22 30080678 Fax : +91 22 23870767 Email : ie@indiratrade.com

Disclaimer

This report is for private circulation within the Indira Group. This report is strictly confidential and for information of the selected recipient only and may not be altered in any way, transmitted to, copied or distributed, in part or in whole, to any other person or to the media or reproduced in any form. This report should not be construed as an offer or solicitation to buy or sell any securities or any interest in securities. It does not constitute a personal recommendation or take into account the particular investment objectives, financial situations, or any such factor. The information, opinions estimates and forecasts contained here have been obtained from, or are based upon, sources we believe to be reliable, but no representation of warranty, express or implied, is made by us to their accuracy or completeness. Opinions expressed are our current opinions as of the date appearing on this material only and are subject to change without notice.